



MIDDLE EAST™
GEOSPATIAL
FORUM

26-27 JANUARY, 2016

AL BUSTAN ROTANA HOTEL

DUBAI, UAE

THEME: SMART TECHNOLOGIES, SMART CITIES, SMARTER LIVES



PROGRAMME GUIDE



The Leading National Geospatial Provider

Bayanat is the national leader for providing end-to-end geospatial services for a range of businesses across diverse sectors including defence, municipality, oil and gas, transportation and utilities. Bayanat's value offering includes surveying (aerial, hydrographic, field & geodesy), spatial data management, cartography and visualization (2D & 3D) and relevant advisory services."

Visit us at Booth #8 at Middle East Geospatial Forum 2016

بيانات
bayanat 



WELCOME MESSAGE

After its tremendous success over the years, since being first held in the region back in 2005, we are pleased to welcome the 2016 edition of the Middle East Geospatial Forum (MEGF) in Dubai. Dubai Municipality feels delighted and honoured to be the co-organiser of this extremely significant event. Also, as last year, Dubai Municipality's annual GIS & Remote Sensing Annual Scientific Forum (GRASF) will again be held together with the Middle East Geospatial Forum. The event, which has become a most sought after congregation of GIS and Remote Sensing professionals from across the Middle East region, showcases several keynote and technical presentations on varied topics.

Over the past few years, with rapid development taking place across the region, geospatial technology has witnessed manifold increase in its usage and has become an inseparable part for the smooth functioning of numerous organisations. With Dubai focussed on improving the quality of lives for its citizens and residents through the creation of robust infrastructure and smart services, the use of geospatial technology is set to witness tremendous increase. However, while development continues unabated, challenges like city management and providing means of livelihood to the ever expanding population have also risen.

The geospatial community in the Middle East is playing a vital role in addressing various issues by enabling agencies to carry out their jobs quickly and more efficiently. The application of these technologies results in improved decision making at various levels, ensuring increased opportunities for industry and society. The geospatial community thus acts as the backbone for efficient governance, leading to overall growth and development.

Dubai Municipality aims to plan, design, build and manage the municipal infrastructure and thus create an excellent city that provides the essence of success and comfort of sustainable living. The Municipality has been instrumental in promoting and propagating the application of geospatial technologies across various sectors in the country. Apart from carrying out its usual municipal and city management functions, Dubai Municipality also plays a key role as a provider of relevant geographic information to other government entities across the Emirate of Dubai. As a result, various agencies across Dubai, ranging from environment to utilities, have started to deploy geospatial technology widely in their everyday functioning.

As the Director General of Dubai Municipality, I am looking forward to this opportunity to share our knowledge and experience with the geospatial community from around the world. With its theme as "Smart Technologies, Smart Cities, Smarter Lives", MEGF-GRASF 2016 is a step towards bringing together representatives from various verticals and organisations in the region to discuss and deliberate on a variety of topics and thus help in the further expansion of these technologies for the overall benefit of the region.

With this, I welcome you all to this extremely significant occasion and hope that you have a wonderful and enlightening experience throughout the course of the event.

H.E. Eng Hussain Nasser Lootah

Director General
Dubai Municipality, UAE

UNDERSTANDING OUR WORLD.

Esri believes that geography is at the heart of building a more resilient and sustainable world.

Geographic knowledge allows you to make critical decisions and empowers you to positively impact the future.

Gain a greater understanding of the world around you. We can help.

Learn more at
esri.com



Copyright © 2015 Esri. All rights reserved.

MASS DATA AND VOLUME COLLECTION

AERIAL MAPPING FALCON 8



AN ACCURATE, SAFE, AND EASY TO USE UAS SOLUTION

MOBILE MAPPING IP-S3



COMPACT, HIGH DENSITY 3D MOBILE MAPPING SYSTEM

LASER SCANNING GLS-2000



COMPACT AND LIGHTWEIGHT MULTI-ADJUSTABLE LASER SCANNER

SIRIUS PRO



ACCURATE AERIAL MAPPING WITH PRE-PLANNED FLIGHTS



CAPTURE REALITY, AT VEHICLE SPEEDS



THREE MODELS ARE SELECTABLE FOR DIFFERENT APPLICATIONS BY THE MEASURING RANGES

Content

26th January 2016

Training Programme: Geospatial Concepts Explained	06
Opening Keynotes & Signing Ceremonies	07
MEGF Plenary Session	08
GRASF Plenary Session	10
Panel Discussion: Geospatial for Quality of Life	11

27th January 2016

Training Programme: Geospatial Concepts Explained	12
MEGF: Municipalities & Smart Cities	13
MEGF: Smart Grid for Electricity & Water	14
MEGF: Geospatial for Oil & Gas and Transportation Management	14
MEGF: GeoSmart Safety and Security	15
GRASF: Oracle Workshop	15
GRASF: GI Science & Remote Sensing	16
GRASF: GI-Science and Smartness	17
GRASF: Seismology, Surveying & Geodesy	18
GRASF: City Smartness & Open Data	19
Exhibitor's Profile	21



THEME: SMART TECHNOLOGIES
SMART CITIES, SMARTER LIVES

TRAINING PROGRAMME | GEOSPATIAL CONCEPTS EXPLAINED

TUESDAY, JANUARY 26, 2016

0800 – 0930 HRS

AL RASHIDIYA BALLROOM (C)



SPEAKERS

Dr. Prashanth Marpu

Assistant Professor, Chemical & Environmental Engineering, Masdar Institute, UAE
Topic: Basics of Remote Sensing

Dr. Mohamed Mostafa

President, Navmatica ME, UAE
Topic: Mapping Explained

Prof Praveen Maghelal

Associate Professor, Masdar Institute, UAE
Topic: Basics of Geographic Information Systems



OPENING KEYNOTES & SIGNING CEREMONIES

TUESDAY, JANUARY 26, 2016

0930 – 1030 HRS

AL RASHIDIYA BALLROOM (C)

OPENING KEYNOTE



Bhupinder Singh
Senior Vice President
Bentley Software
USA

Bhupinder joined Bentley in 1994 and is the Senior Vice President of Bentley Software. His team is responsible for the strategic direction, development and delivery of Bentley's industry leading software solutions for sustaining infrastructure. His prior roles at the company include managing director of sales for Bentley South Asia and senior vice president of the Platform Products Group. Prior to joining Bentley, Bhupinder held various software engineering positions at Montgomery Watson Hazra, Bell Labs and Intergraph Corporation. Bhupinder holds master's degrees in Computer Science from Rutgers University, Structural Engineering from Vanderbilt University, and a bachelor's degree in civil engineering from IIT Delhi. He also has a certificate in Management from the Wharton School of Business at the University of Pennsylvania.

GUEST ADDRESS



H.E. Eng Hussain Nasser Lootah
Director General
Dubai Municipality
UAE

Signing Ceremony between Fujairah Municipality and Dubai Municipality
CubeSat Launch ceremony by Dubai Municipality and Mohamed Bin Rashid Space Centre
Signing Ceremony between Etisalat and Dubai Municipality

- Signing Ceremony between Fujairah Municipality and Dubai Municipality
- CubeSat Launch ceremony by Dubai Municipality and Mohamed Bin Rashid Space Centre
- Signing Ceremony between Etisalat and Dubai Municipality



TUESDAY, JANUARY 26, 2016

1030 – 1130 HRS

AL RASHIDIYA BALLROOM (C)

● CHAIRPERSON & MODERATOR



Orhan Altan

F.V. President
ISPRS
Turkey

Prof Dr. Orhan Altan has been a council member of the International Society of Photogrammetry and Remote Sensing (ISPRS) since 2000. He has published more than 150 papers in Turkish, German and English in domestic and international journals. He is editor or co-editor of more than 16 international books. His main working areas are digital and architectural photogrammetry, spatial information systems and deformation measurements.

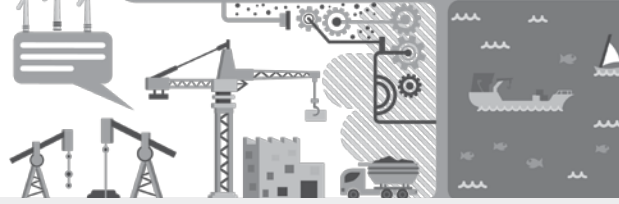
● PLENARY SPEAKERS



Adnan Al Rais

Manager
Business Development and External Relations
Office Mohammed Bin Rashid Space Centre
UAE

Adnan and his team are responsible for the development, design and implementation of the ground segment of the Emirates Mars Mission and also other future deep space missions undertaken by Mohammed bin Rashid Space Centre. In addition, Adnan is responsible for the commercialization of MBRSC projects, specifically on the commercialization of DubaiSat-1 and DubaiSat-2 imaging products and services. Adnan was part of the team that built the UAE's first ground station at the Emirates Institution for Advanced Science & Technology (EIAST) in 2007 and also worked with the team building the ground segment of the DubaiSat satellite series, introducing commercial ground support services and antenna hosting services at EIAST's Ground Station in Dubai. Adnan has published and presented a number of papers in the areas of remote sensing and satellite image applications. He holds a Bachelor's in Computer Engineering from Khalifa University, Sharjah.



Johann Jessenk

Director Middle East
Russia, BeNeLux
Hexagon Geospatial EMEA
Austria

During his more than 20 years in the Geospatial industry Johann had the chance to work in several positions and areas. Graduated as a surveyor at the Technical University of Vienna he started his career in parallel with the electronic evolution of this industry, when computer science, we call this now "Geospatial", got involved and flooded engineering organizations. After a technical orientation he gradually moved into sales and marketing holding several management positions in his home country Austria and the European Union. Since 2008 Johann took global roles in strategic Marketing for Intergraph. In 2011 he took over responsibilities in Business Development and Partner Management for Africa and Middle East. Within Hexagon Geospatial he holds a leading role in EMEA managing Middle East, Russia and BeNeLux.



Richard Budden

Business Development Manager for
Transportation, Infrastructure and
Smart Cities, Esri
UAE

Richard Budden is a Business Development Manager for Esri, focusing on smart cities, transportation and infrastructure. He studied at the University of Reading in the UK and in 2001 received a Bachelor of Science in Human and Physical Geography. He has over 12 years of experience in GIS and information management, and previously provided GIS consultancy and advice to clients as part of the geospatial team at UK design and engineering firm Atkins. In 2011 Richard relocated to the Middle East where he has supported complex multidisciplinary projects for clients including the UAE Ministry of Public Works, Kuwait Municipality, Abu Dhabi Urban Planning Council and the Qatar Ministry of Municipality and Urban Planning. Richard has engaged with government clients and offered strategic advice that has contributed towards the development and implementation of national visions and smart cities. In 2014 Richard joined Esri in Dubai and is responsible for the West Asia, Middle East and Africa region.



TUESDAY, JANUARY 26, 2016

1200 – 1400 HRS

AL RASHIDIYA BALLROOM (C)



CHAIRPERSON & MODERATOR



Hussein Abdulmuttalib

Dubai Municipality
UAE



KEYNOTE SPEAKERS



Thomas Blaschke

Professor, University of Salzburg, Department of Geoinformatics-Z_GIS, Austria

Topic: Smart Cities & quality of life: GIS & remote sensing to intervening instead of mapping & monitoring



Mohamad Khodr Al-Dah

Dubai Land Department
UAE

Topic: An Introduction to GIS Systems AT DLD



Prof. Orhan Altan

F.V. President, ISPRS, Turkey

Topic: Value of Earth Observation for the Future (from Air and Space)



Prof. Georg Gartner

ICA, Austria

Topic: Getting small is getting big: About the role of Location-based Services for Smart Environments



Prof. Martin Breunig
Prof. Mulhim Al Doori

Dean of Geodetic Institute, Germany

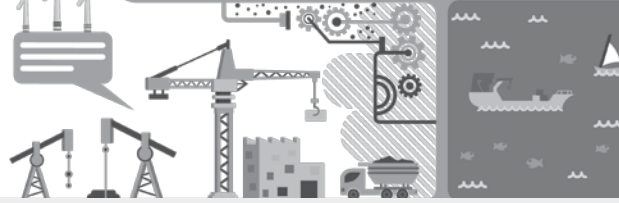
Topic: Computer-Aided Collaborative Subway Track Planning in Multi-Scale 3D City and Building Models



Sisi Zlatanova

Delft University of Technology, The Netherlands

Topic: 3D data fusion: the challenges



PANEL DISCUSSION: | GEOSPATIAL FOR QUALITY OF LIFE

TUESDAY, JANUARY 26, 2016

1500 – 1600 HRS

AL RASHIDIYA BALLROOM (C)

 SPEAKERS

Prof. Georg Gartner

ICA, Austria

Topic: Service-orientated Cartography

Sisi Zlatanova (with Simeon Nedkov and Bart Kroesbergen)

Delft University of Technology

The Netherlands

Topic: Facility management: what kind of models do we need?

Panel Discussion



THEME: SMART TECHNOLOGIES SMART CITIES, SMARTER LIVES

TRAINING PROGRAMME

GEOSPATIAL CONCEPTS EXPLAINED

WEDNESDAY, JANUARY 27, 2016

0900 – 1030 HRS

HARAYER HALL

SPEAKERS

Dr. Hussein Harahsheh

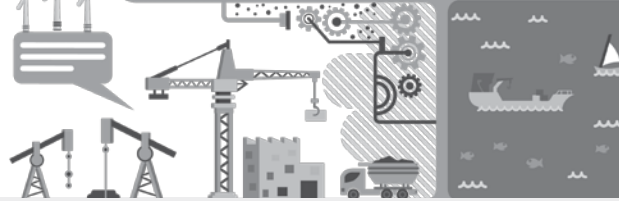
General Manager, GlobalScan Technologies, UAE
Topic: Remote Sensing Applications

Dr. Mohamed Mostafa

President, Navmatica ME, UAE
Topic: Mapping Applications

Prof Praveen Maghelal

Associate Professor, Masdar Institute, UAE
Topic: Geographic Information Systems Applications



WEDNESDAY, JANUARY 27, 2016

1030 – 1430 HRS

HARAYER HALL



CHAIRPERSON & MODERATOR

Dr. MK Munshi

Chair, OGC India Forum, Open Geospatial Consortium



SPEAKERS

Ahmed Nasir

GIS Unit – IT Dept, Sharjah Municipality, UAE

Topic: Sharjah Municipality drainage data migration to smart maps

Vivek Kale

Solutions Director, Bentley Systems, UAE

Topic: BIM and GIS for Subsurface Engineering

Mohd. Afroz

GIS, MOMRA, Saudi Arabia

Topic: Enhance Topographic Data by Terrestrial and Oblique Imagery

Damien Giolito

General Director, IMAO, France

Topic: The B66, an answer for municipalities and smart cities

Peter Csörgits

Chief Engineer, Geodezia, Hungary

Topic: Past and future — Data collection technologies to provide precise data for GeoBIM and Smart Cities

Ahmed Taha

Application Engineer - Utilities and Mapping, Bentley Systems, UAE

Topic: Reality Modelling for Smarter Cities

Thomas Blaschke

Professor of Geoinformatics, University of Salzburg, Austria

Topic: Sensors, image processing and psychology-based methods for smart city research

Eman Al Tunajji

Engineer, Applications Development and Analysis, MBRSC, UAE

Topic: Smart Application for Feature extraction and 3D modeling using high resolution satellite Imagery (SAFIY) Project



THEME: SMART TECHNOLOGIES SMART CITIES, SMARTER LIVES

MEGF | SMART GRID FOR ELECTRICITY & WATER

WEDNESDAY, JANUARY 27, 2016

1030 – 1200 HRS

AL KHAYAL A & B HALL

SPEAKERS

Abdullah Al Osaimi

IT Department, Ministry of Electricity & Water, Kuwait

Topic: Strategic Alignment to Meet Increasing Demand: Kuwait MEW's Story

Zafar Ali

GlobalScan Technologies, UAE

Topic: The LYNX LiDAR MOBILE MAPPER™ for Power Line Corridors and Volumetric Analysis

El Moiz A. Al Amin

GIS Section, Sharjah Electricity & Water Authority, UAE

Talal Shawwa

Sales Director - Utilities, Bentley Systems, UAE

Topic: Reality Modelling For Utilities

Chrystelle Ourzik

Business Development Manager, Esri, UAE

Topic: The location aware utility

MEGF | GEOSPATIAL FOR OIL & GAS AND TRANSPORTATION MANAGEMENT

WEDNESDAY, JANUARY 27, 2016

1300 – 1430 HRS

AL KHAYAL A & B HALL

SPEAKERS

Dario Conforti

Worldwide Channel Partner Manager, Terrestrial Laser Scanner Products, Optech, Canada

Topic: Combined Laser/Multibeam Sonar Survey of Sydney Harbor

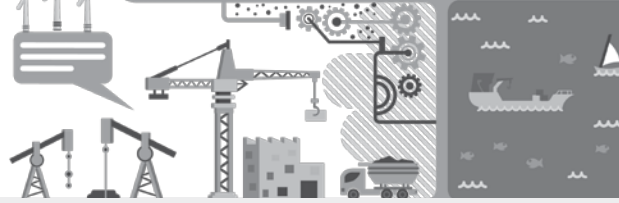
Dr Saad A. AlMubayedh

Founder & CEO, THTC, Dubai, UAE

Topic: Real-Time & Historical Traffic Info: Successful Deployments in GCC

Jitendra Deshpande

Associate VP, ADCC Infocad IT Services, UAE



MEGF | GEOSMART SAFETY & SECURITY

WEDNESDAY, JANUARY 27, 2016

1030 – 1200 HRS

NASHWAN HALL

● CHAIRPERSON & MODERATOR

Dr. Mohammed Mostafa

President, Navmatica ME, UAE

Topic: Indoor Mapping — State of the Art and New trends

● SPEAKERS

Dr. Rao S. Ramayanam

Vice-President Sales – Middle East, Africa and South Asia, URTHECAST, Canada

Topic: UrtheCast HD Videos, High Resolution Imagery and SAR Data from Space for Earth Observations

Andy Wilson

Director Strategic Business Development, Ordnance Survey International, UK

Topic: The best resilience decisions come from spatially connected government

Mike O'Boyle

National Security Business Development Manager, Esri, UK

Topic: Building Safer Communities: Creating a more secure & resilient future

ORACLE WORKSHOP

WEDNESDAY, JANUARY 27, 2016

0900 – 1430 HRS

SALSABEEL HALL

09:00 - 9:30: Oracle Spatial Overview (PPT)

09:30 - 12:00: Basic Spatial Features (Hands-On Lab)

13:00 - 13:30: Basic Spatial Features (Hands-On Lab)

13:30 - 14:30: Advanced Spatial Features (Demo)



WEDNESDAY, JANUARY 27, 2016

1030 – 1200 HRS

BAHRI B HALL

●● CHAIRPERSON & MODERATOR

Prof. Martin Breunig

Dean of Geodetic Institute, Germany

●● SPEAKERS

Naeema Al Hosani

Assistant Dean for Student Affairs, UAE University, UAE

Topic: Projects and activities of UAEU students for International Map Year 2015-2016 (IMY)

Thomas Blaschke

Professor, University of Salzburg, Department of Geoinformatics - Z_GIS, Austria
(with Bernd Resch, Stefan Lang, Dirk Tiede and Gyöla Kothencz)

Topic: Object Based Image Analysis: Integrating GIS and remote sensing for smart city research and smart city solutions

Dr. Hussein Harahsheh

General Manager, GlobalScan Technologies, UAE

Topic: Oil Pollution Monitoring on Abu Dhabi coastal zones using KOMPSAT-5 RADAR imagery

Dr. Prashanth Marpu

Assistant Professor, Masdar Institute of Science & Technology, UAE

Topic: Sensing and Modeling the Urban Microclimate Regime in Desert Cities

Giridhar Reddy Kolan

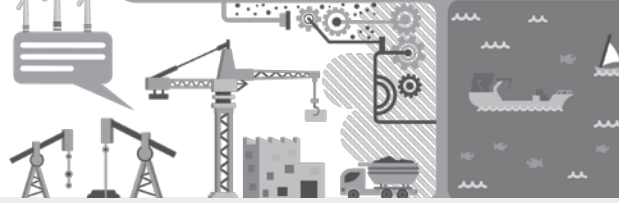
Abu Dhabi City Municipality, UAE

Topic: Cut & Fill Information Management System at Abu Dhabi City Municipality

Abdelgadir Abuelgasim

Assistant Professor, UAE University, UAE

Topic: Remote sensing of sabkha ecosystems in the United Arab Emirates



WEDNESDAY, JANUARY 27, 2016

1300 – 1430 HRS

BAHRI B HALL



CHAIRPERSON & MODERATOR

Simon Laun

Karlsruhe Institute of Technology



SPEAKERS

Paul Kuper

Karlsruhe Institute of Technology

Topic: Management of spatio-temporal data with a link to mobile geographic information systems

Asmaa Al Hammadi

Abu Dhabi City Municipality

Topic: Updating GIS database with utility planning data at Abu Dhabi city municipality

Dr. Mohammed Mostafa,

President, Navmatica ME, UAE

Topic: Mobile Mapping for Mega Projects

Carsten Roensdorf

Ordnance Survey, UAE

Topic: Sharing Data Across Entities

Mohamed Elias

GlobaScan Technologies, UAE

Topic: Geo-spatial Enterprise Mobility System (GEMS)

Sumaya Al Zarouni

Dubai Municipality

Topic: The creativity in MAKANI addressing system



WEDNESDAY, JANUARY 27, 2016

1030 – 1200 HRS

BAHRI A HALL



CHAIRPERSON & MODERATOR

Prof Mulhim Al Doori

American University of Dubai, UAE



SPEAKERS

Ossama Sayed Aly Mohamed

Geodetic Specialist, Dubai Municipality

Topic: Smart Monitoring System

Eisa Ahmed Al Hammadi,

Survey Department, Dubai Municipality

Abu Dhabi City Municipality Marine Information System

Simon Laun

Karlsruhe Institute of Technology

Topic: Estimation of Damage to Buildings with Kriging Methods using the Example of an Earthquake

Dr Alaeldin Idris

Sharjah Electricity and Water Authority, UAE

Topic: Hydrogeomorphological mapping in parts of Sharjah Emirate

Eman Al Khatibi and Khalid Shimo

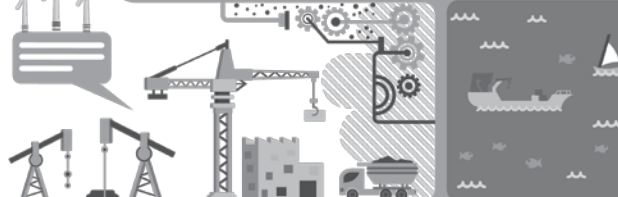
Survey Department, Dubai Municipality, UAE

Topic: Integrated Weather Monitoring and Early Warning System

Mustafa Baqer and Khalid Shimo

Survey Department, Dubai Municipality, UAE

Topic: Tsunami - Monitoring and Early Warning System



WEDNESDAY, JANUARY 27, 2016

1300 – 1430 HRS

BAHRI A HALL

● CHAIRPERSON & MODERATOR

Dr. Prashanth Marpu

Masdar Institute of Science and Technology, UAE

● SPEAKERS

Mohamed Mostafa

President, Navmatica ME, UAE

Topic: Precision Geodetic Control for Mega Construction Projects

Hussein Abdulmuttalib

Dubai Municipality, UAE

Government Open Data and Relation to Smartness Quality of Life

Mahmood Humaidan Kadid,

Major Ortophoto Analyst, Dubai Municipality, UAE

Bicycles as complimentary public transportation facility

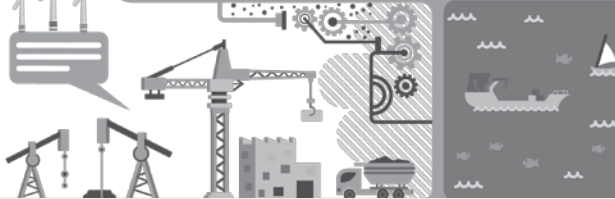
Eman El Khatibi

Survey Department, Dubai Municipality, UAE

Topic: Survey Projects - Video Presentation

EXHIBITOR'S PROFILE »»»





EXHIBITORS'S PROFILE



Bayanat is a national leader in the provision of value-added mapping, geospatial services and GIS solution. It aspires to further enrich its leadership position by enabling public and private organizations to streamline their operations and enhance their decision-making process through leveraging its fully integrated geospatial solutions and seamless spatial data. Bayanat provides end-to-end geospatial services for a range of businesses across diverse sectors including defence, municipality, oil and gas, transportation and utilities. Bayanat's value offering includes surveying (aerial, hydrographic, field & geodesy), spatial data management, cartography and visualization (2D & 3D) and relevant advisory services.

Contact Person: Majd Nabulsi

Email: mnabulsi@bayanat.co.ae
Website: www.bayanat.co.ae

ces and comprehensive managed services. Founded in 1984, Bentley has more than 3,000 colleagues in over 50 countries, more than \$600 million in annual revenues, and since 2008 has invested more than \$1 billion in research, development, and acquisitions.

Contact Person: Ankur Jhaveri

Email: ankur.jhaveri@bentley.com
Website: www.bentley.com



Bentley Systems is a global leader in providing architects, engineers, geospatial professionals, constructors, and owner-operators with comprehensive software solutions for advancing the design, construction, and operations of infrastructure. Bentley users leverage information mobility across disciplines and throughout the infrastructure lifecycle to deliver better-performing projects and assets. Bentley solutions encompass MicroStation applications for information modeling, ProjectWise collaboration services to deliver integrated projects, and AssetWise operations services to achieve intelligent infrastructure – complemented by worldwide professional servi-

The origin of Dubai Municipality was founded in 1954 commencing its activities with a cadre of seven employees undertaking simple tasks in cleaning the city. The first decree establishing the Municipality was on February 28, 1957, whereby 23 municipal council members had been appointed from the elders of the country and traders with limited powers, the most important of which was to take care of health and architectural affairs of the city as well as to organize construction and beautification of the city and provide constructive suggestions to the government. Dubai Municipality passed a series of evolutionary stages through the years of its multiplied tasks, including: In the 1974 His Highness Sheikh Rashid bin Saeed Al Maktoum, God rest his soul, issued a decree establishing the municipality, which nullified the former order to establish the municipality and stated to establish the new Dubai Municipality having independent characteristics, morals and powers within the entire emirate that includes the Municipal Council and the administration body, which executes the policy and directives and in accordance with the decree. In 1980 a decree had been issued estab-



EXHIBITORS'S PROFILE

lishing the Municipal Council appointing 32 members headed by His Highness Sheikh Hamdan bin Rashid Al Maktoum, Chairman of Dubai Municipality. The Municipality continued its development coinciding with the growth of the Emirate of Dubai and reached to 13,000 employees working in 32 departments under six sectors, namely:

Corporate support services sector International affairs and partnerships sector Engineering and planning sector Environment and public health services sector General support sector Environment and public health monitoring sector

Website: www.dm.gov.ae


DT Dutco Tennant LLC is a Technology Management Company with a futuristic outlook and a commitment to the customer, which is of prime importance to us in building enduring relationships for the future. Our success in this challenging market is the result of an unwavering focus on anticipating market trends, identifying and meeting our customers' needs, providing them with value-added services and keeping up with advances in technology. We offer Leica Surveying Solutions with a range of products including Manual and Robotic Total Stations, GNSS/GPS Receivers, Digital and Automatic Levels, Mapping and GIS Solutions, High Definition Surveying (3D Scanners), Machine Control Solutions and CORS. The unit's capabilities include State-of-the-art servicing & calibration facilities & factory trained engineers to offer steadfast repairs and support. With the company's prop up and our assiduous efforts Dutco Tennant has established itself as a brand connotation to the survey instrument

business in the gulf. Dutco Tennant has a very powerful Distribution Channel in the Middle East and Africa with their decades of experience and market reputation With them to support the distribution system.

Contact Person: Murali Mohan

Email: murali.mohan@dutcotennant.com

Website: www.dutcotennant.com

 Esri® helps organizations map and model our world. Esri's GIS technology enables them to effectively analyze and manage their geographic information and make better decisions. Every year, Esri reinvests more than 20 percent of its revenues in research and development to ensure users have the best tools possible to accomplish their missions. A comprehensive suite of training options helps them fully leverage their GIS. Esri actively supports organizations involved in education, conservation, sustainable development, and humanitarian affairs by donating hundreds of millions of dollars in software, training, consulting, and project support.

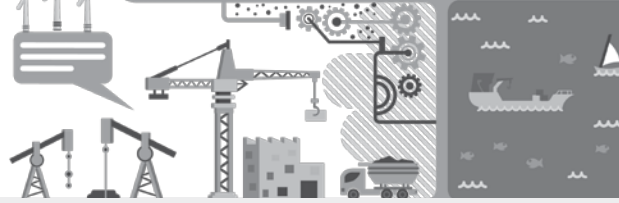
Contact Person: Sohail El Abd

Email: SEIAbd@esri.com

Website: www.esri.com



Fujairah Municipality was founded in 1969 vide local act no (1) for year 1969. The municipality is a local government organization specialized in municipal urban and rural municipal affairs. It is responsible for the provision of public services consistent with the development require-



EXHIBITORS'S PROFILE

ments. The municipality is an independent with its own organizational structure and own administrative and technical to carry out their assigned duties and tasks and to achieve their objectives.

OBJECTIVES OF FUJAIRAH MUNICIPALITY

Enforcement on the growth of the urban, commercial, industrial, economic development and sustainable development as well as encouraging the launching of major projects and attracting local, regional and international investment. It also supports the development of the agricultural, animal and fishing resources, in cooperation with the concerned parties. While simplifying procedures for issuing permits such as commercial, industrial, trade licenses, land and building ownership, contractors classification, industrial land leasing, commercial and real state mortgage certifications.

Organization and monitoring wholesale and retail markets dealing with food stuffs, gifts, garment, electrical and electronic, instruments and equipment, sanitary, electromagnetic, telephones (all types), sports equipment, furniture, trade shops and industrial areas.

Attending to the infrastructure and land usage and urban planning.

Maintaining hygiene, public health, wild life, the protection of the environment from contamination and the establishment of reservations for marine and wild life.

Customer protection in cooperation with concerned the parties from commercial fraud, fraudulent sale campaigns and misleading advertisements, and participation in creating consumer awareness on commodities and services.

Operation, management and development of the municipality laboratories for testing

water, foods, meat, air, building material and others.

Contact Person: Abdullah Khaddeim

Email: abdullah@fujmun.gov.ae

Website: www.fujmun.gov.ae



Geodézia International is one of the leading providers of complete geospatial and geoinformatic solutions in Europe. Beyond providing GIS data collection, we undertake the complete implementation of complex, tailor-made geographic information solutions (from database -building to system operation), making us unique in this regard on the European market. Our newly established data processing centre began its operations in 2014, it is equipped with cutting edge technology and staffed by some of our most experienced engineers who are constantly working on processing the data extracted for different projects. Our services range from traditional surveying, the creation of land cadastres, Easement mapping, Geographic Information Systems – GIS, Public Utility Surveying, Planning Maps, As-built Maps, Inventory and Facility Management Mapping, Noise mapping to Flood Simulation, as well as Road, Tunnel and Railway surveying. Our flagship service, which is often the key component of the above mentioned services, is creating state-of-the-art 3-D point cloud extractions that provide spatial mappings of any objects involved in the planning, design, development and construction of buildings, city quarters, public roads, railways, public utilities and any other human-made or natural environment (including bodies of water, such as riverbeds). Our clients range from the Hungarian Gover-



EXHIBITORS'S PROFILE

ment, for whom we undertook a complete survey of all the water utilities in the country under the Environment and Energy Operation Program, to the EU, participating in their ongoing Land Use/Cover Area frame Statistical Survey. Geodézia International is also the strategic partner of the Hungarian Military, providing surveying, mapping and GIS services, and is a listed and approved supplier of NATO.

Contact Person: Stekl László

Email: stekl.laszlo@geodezia.hu

Website: www.geodezia.hu



Geoimage is composed of Geoimage Geographical Maps, established in

Dubai in January 2007, and Geoimage Survey, established in Dubai in August 2010. Geoimage is specialized in providing consultancy services in Geospatial Data generation, processing and analysis, Digital Mapping, Geographic Information Systems (GIS) and Real Estate Survey Services. Geoimage is employing highly qualified geospatial data consultants with over 28 years experience. Geoimage offers products and services in digital photogrammetry, topographic mapping, surveying, remote sensing, and GIS applications. Geoimage supplied GIS consultancy services and executed mapping projects in Jordan, Oman, Qatar, Saudi Arabia, and UAE. Geoimage is Distributor in the Middle East for Airbus Defence and Space, Lorient and SpacEyes.

Contact Person: Jehad Hijazi

Email: jehad@geomagedubai.com

Website: www.geomagedubai.com



Geospatial Media and Communications works towards

realising its vision 'Making difference through geospatial knowledge in world economy and society', through following activities and programmes: Media and Public Relations, Outreach and Business Development and Commercial Research and Policy Advocacy. It is an internationally accredited organisation, committed to serve stakeholders of geospatial community and work towards opening a new era of industrialisation and productisation, while facilitating collaboration and demonstrating value and benefits of geospatial technology and information for governance, businesses and people.

Contact Person: Abhishek Kotangle

Email: abhishek@geospatialmedia.net

Website: www.geospatialmedia.net



Global Scan Technologies LLC is a pioneering UAE company founded in

2002, one of Belhassa International Group of companies, delivering comprehensive Geo-information solutions across the entire business spectrum. GST is becoming a regional leader in provision of the latest Earth Science products & services. GST has its own satellite receiving station for earth observation satellite imagery. By combining Remote Sensing and GIS with earth science specialized skilled staff, GST provides a wide range of strategic and technical approach on Natural and Environment science and applications. GST provi-



EXHIBITORS'S PROFILE

des solutions in Satellite Imagery, Airborne Hyperspectral Imagery, various ranges of LiDAR solution equipments from Optech (Terrestrial, Mobile and Airborne), Real Time Oil Spill Detection, ENVI Image processing software, range of Lidar data processing software and services. GST is the leading manufacturer and service provider for customized Intelligent Vehicle Tracking and Business Automation Solution over the region.

Contact Person: Zafar Ali

Email: zafar@belhasa.ae

Website: www.belhasa.ae



IMAO is a French company specialised in worldwide aerial data acquisition. Born out of the passion of two men in 2001, IMAO operates the latest generation of digital aerial survey cameras and LIDAR sensors installed in its own fleet. The company provides its customers with quality georeferenced data captured all around the globe. From the full coverage of a country to the careful exploration of a restricted area for the archaeological research, IMAO adapts its acquisition's tools on demand and constantly innovates to meet the challenges of the market.

Contact Person: Valérie ALLIAUME

Email: val@imao-fr.com

Website: www.imao-fr.com



Khatib & Alami (K&A) is a leading Geospatial Systems Integrator and the First Esri Platinum Partner in the Middle East and Africa. K&A started in 1959 as a multidisciplinary architectural and engineering consulting company and in 1988 extended its offerings to include GIS services. K&A has over 50 years of local and regional experience covering Middle East and North Africa. The Company and its affiliated partnerships has permanent offices in 21 Cities operating in 28 countries including United Arab Emirates , Kingdom of Saudi Arabia, Oman, Qatar, Kingdom of Bahrain, Jordan, Palestine, Iraq, Algeria, Egypt, Morocco, Libya, Tunisia, Sudan, Syria, Yemen, Kazakhstan, Turkmenistan and USA. K&A employs over 5,500 engineers, technicians and administrators. Since 1984 K&A has continuously ranked among the top 100 International Design firms as published by Engineering News Record (ENR). Khatib & Alami has also obtained the ISO 9001-2008 certification for their Quality Management System and is CMMI Certified Level 3.

Contact Person: Mohamed Misbah

Email: mohamed.misbah@khatibalami.com

Website: www.khatibalami.com



Mohammed Bin Rashid Space centre was originally established in 2006 as the Emirates Institution for Advanced Science & Technology (EIAST), accumulating knowledge, recruiting Emirati



EXHIBITORS'S PROFILE

scientists and engineers, and launching advanced scientific projects, until the Mohammed bin Rashid Space Centre (MBRSC) was established in 2015 by Sheikh Mohammed bin Rashid. The establishment decree saw EIAST integrated with the newly founded MBRSC, which would now take charge of the UAE's advanced science and technology projects, and take responsibility for contributing towards the UAE's move into a knowledge-based economy.

Contact Person: Ghariba Salem

Email: Ghariba.Salem@mbrsc.ae

Website: www.mbrsc.ae



PCI Geomatics, founded in 1982, is the world leader in geo-imaging products and solutions. PCI

Geomatics has set the standard in remote sensing and image processing tools offering customized solutions to the geomatics community in over 135 countries. PCI Geomatics is a privately held Canadian corporation headquartered in Toronto, Ontario and Gatineau, Quebec with worldwide facilities located in the United States; Arlington and Beijing, China.

Contact Person: Bonnie Harris

Email: harris@pcigeomatics.com

Website: www.pcigeomatics.com

Navmatica

Navmatica provides consulting and software development services. Our experience covers GNSS, GIS, Photogrammetry, systems integration, airborne mapping, mobile mapping, Digital Elevation Modelling and image processing. Navmatica is a leader in Geospatial Engineering and Construction Engineering Services incorporated in Toronto, Canada since 2003 with branches in Dubai, UAE and Alexandria, Egypt. In Geospatial Engineering, we are focused on the following services:

- Aerial Surveys • Mobile Mapping
- Photogrammetry • Laser Scanning
- Geodesy • GNSS • GIS • Data QA/QC
- Custom Software Development
- Training and workshops

Contact Person: Dr. Mohamed MR Mostafa

Email: mostafa@navmatica.com

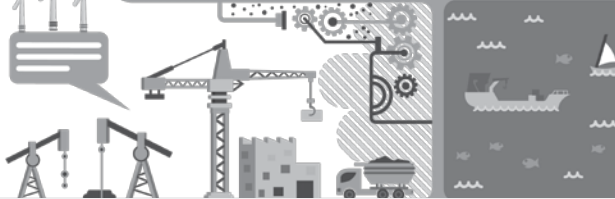
Website: www.navmatica.com



Plumb surveying is a certified company, founded in 2011, in order to provide professional surveying service to the associated profession.

During the past few years Plumb acquired a reliable reputation for providing conscientious and reliable service to municipalities, governmental agencies, and private industries located throughout UAE, GCC and West Africa, however we are familiar with working in locations around the globe in varying operating environments, which require a wide range of services.

We deliver appreciable range of surveying services from aerial surveying to topography services and coordinates services, in order to provide you with all the technical data and useful Information in a reliable, efficient and secure manner. We are dedicated in performing our services using the



EXHIBITORS'S PROFILE

highest standards in the practice of surveying with an emphasis on quality, cost, and time. Furthermore we are committed to remain on the leading edge of technology and automation where Plumb Surveying stays at the forefront of surveying technologies. We purchase the most up-to-date survey instrumentation and office software and hardware to service our clients, where we strive to achieve strong market positions based on technologies, high-value services and a strong international or regional presence.

Most of all, we understand the need to be part of a team devoted to getting the work and the project done.

Contact Person: Ali A. Chehab

Email: ALC@plumb-surveying.com

Website: www.plumb-surveying.com



Founded in 1927, Sharjah city municipality (SM) is one of the oldest municipalities in the UAE. However, the modern system of the municipality as a multiple-service providing body was initiated in 1971 when a decree was issued to define its domain of activities and grant it with powers to carry out the necessary supervision over all public utilities and public services provided to citizens. The decree gave SM a strong start to work towards a civilized and well-developed emirate on the economic and social levels. The municipality is a civic body through which services and utilities of the emirate's modern society are intervened. Therefore, the role and activities of the municipality cannot be fully detailed in this

short expose. SM executes many public projects in the emirate of Sharjah every year, and it has a great role in boosting the economy, society, public health, environment and many other fields in the emirate. Since its foundation, SM has gone through multiple stages and witnessed rapid growth of its occupational and organizational structures, headquarters, balance sheets and responsibilities.

Website: www.shjmun.gov.ae



Sigma Enterprises LLC is an Engineering Technology company which offers products and services across the GCC. Sigma supports a diverse range of engineering equipment requirement of industries including Civil Engineering, Manufacturing, Oil & Gas, Education & Research, Marine and Defense & Security. Sigma is one the leading Positioning Solution provider in the region and offers comprehensive solutions in Optics, GNSS, GIS, Mapping, Scanning, Dimension Control, Monitoring Aerial Hydrography and Machine Control. Sigma represents Topcon Positioning brands namely SOKKIA and TOPCON in the UAE & Qatar and has two Authorized Service Centres in the Middle East region. Sigma Enterprises LLC is an ISO9001:2008 company.

Contact Person: Saili Kuray

Email: saili_kuray@sep.ae

Website: www.sep.ae



EXHIBITORS'S PROFILE



SPACE IMAGING MIDDLE EAST Space Imaging Middle East (SIME) is the leading geospatial and GIS solutions provider in the MENA region. We offer a full spectrum of products and services ranging from imagery collection and processing, to highly customized and sophisticated GIS database and software solutions. SIME is also a founding member of the WorldView Global Alliance, a partnership between SIME, DigitalGlobe, Inc. and European Space Imaging. The Alliance offers our clients a single channel through which to access best-in-class high-resolution satellite imagery products and services combined with local, direct access service for rapid collection and tailored GIS solutions, supported by expert customer service.

Contact Person: Fady Al Assaad

Email: fady@spaceimagingme.com

Website: www.spaceimagingme.com



TOPCON Topcon Positioning Middle East and Africa FZE (TPMA), is located in Dubai, United Arab Emirates. TPMA is a subsidiary of Topcon Corporation, a Japanese multinational company who is a world leader in the manufacture of optical and electronic instruments for surveying, construction, machine control, medical and ophthalmic applications. Topcon Corporation was established in 1932 specializing in the manufacture of optical instruments. TPMA was established in Novem-

ber 2010 and business activities started in January 2011 to coordinate the sales and marketing activities of Topcon Group in Middle East and Africa for positioning business under TOPCON, SOKKIA, 2LS and MAGNET brands. Distribution, sales, technical service and support / development of the sales network are coordinated by TPMA as well as the vital feedback flow of information from the Middle East and Africa Market to the factory.

Contact Person: Shaheed Rahman

Email: shaheed@topcongulf.com

Website: www.topcongulf.com

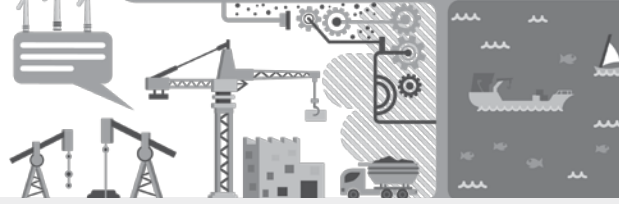


urthecast UrtheCast is developing the world's first Earth video platform, with data captured from space in full color. To achieve this, UrtheCast has built, launched, installed and now operates two cameras aboard the International Space Station (ISS), including the world's first Ultra HD Earth color video camera. In addition to the two sensors on the ISS, UrtheCast owns and operates the Deimos-1 and Deimos-2 satellites through its Spanish subsidiary, Deimos Imaging. UrtheCast is also developing the world's first fully-integrated multispectral optical and Synthetic Aperture Radar (SAR) commercial constellation of Earth Observation satellites, which is slated for deployment in 2019-2020.

Contact Person: Dr R. S. Rao

Email: rramayanam@urthecast.com

Website: www.urthecast.com



EXHIBITORS'S PROFILE



Vexcel Imaging ME is the reseller of Vexcel Imaging in the Middle East and West Africa. Vexcel Imaging, a wholly-owned MICROSOFT subsidiary, is a leading provider of digital large-format aerial cameras. The UltraCam sensor family includes the digital photogrammetric aerial camera systems UltraCam Hawk, UltraCam Falcon and UltraCam Eagle, as well as the UltraCam Osprey, a combination of a photogrammetric nadir camera with simultaneous recording of oblique images. Microsoft's UltraCam business group offers state-of-the-art photogrammetric products based on the latest and most-advanced technological developments. With the advent of the UltraCamLp and UltraCam Eagle, our innovation path has brought to market exceptional system integration, with all system components located in the sensor heads. This includes computing units, solid state storage devices, and our UltraNav direct geo-referencing and flight management system. UltraCam systems are complemented by the UltraMap photogrammetric workflow software that allows UltraCam customers to generate radiometrically-corrected and color-balanced Level 3 imagery (in TIFF or JPEG), high-density point clouds, digital surface models, and DSM/DTM-derived orthophotos. Additionally, UltraCam systems are also highly compatible with third-party software systems, IMU/GPS/FMS products, and camera mounts. Meanwhile, Microsoft also offers its UltraMount-branded line of OEM GSM gyro-stabilized mounts.

Contact Person: Kamal Azhar

Email: kazar@gistransport.com

Website: www.gistransport.com

New website, latest offers, start saving...



Subscribe and stay ahead of the game!

The content that you can trust

info@geoconnexion.com
geoconnexion.com

GEOBUIZ

All the Buzz about Geospatial Biz



Watch the important news, listen to top influencers, get updates from major events

PROGRAMME SCHEDULE

26-27 January, 2016 | Al Bustan Rotana Hotel, Dubai, Uae

Monday, 25th January 2016 (Pre-Conference Day)

Time (Hrs)	Harayer Hall
08:00 - Onwards	Registration
10:00 - 11:00	Networking Tea/Coffee
11:00 - 12:30	Middle East Geospatial Business Leaders' Summit (By-Invitation Only)
12:30 -13:30	Lunch Break
13:30 - 15:00	Middle East Geospatial Business Leaders' Summit (By-Invitation Only)
15:00 -16:00	High Tea

Tuesday, 26th January 2016

Time (Hrs)	Al Rashidiya Ballroom (C)	Al Rashidiya Ballroom (A&B)
7:00 - Onwards	Registration	
8:00 - 09:30	'Geospatial Concepts Explained' Workshop (Harayer Hall)	
09:30 - 10:30	Opening Keynotes & Signing Ceremonies	
10:30- 11:30	MEGF Plenary Session	
11:30 - 12:00	Exhibition Inauguration/Networking Tea Break	Exhibition Visit Hours
12:00 -14:00	GRASF Plenary Session	
14:00 - 15:00	Lunch / Exhibition Visit	
15:00 -16:00	Panel Discussion: Geospatial Technology for Smarter Lives	
16:00 -17:30	Exhibition Visit / Networking Tea	

Wednesday, 27th January 2016

Time (Hrs)	Harayer Hall	Al Khayal A & B	Nashwan	Salsabeel Hall	Bahri B Hall	Bahri A Hall	Al Rashidiya Ballroom (A&B)	
7:30	Registration							
9:00 - 10:30	'Geospatial Concepts Explained' Workshop			Oracle Workshop Oracle Spatial Overview (PPT) 9:00 - 9:30			Exhibition Visit Hours	
10:30 - 12:00	Municipalities & Smart Cities	Smart Grid for Electricity & Water	Geo-Smart Safety & Security	Oracle Workshop: Basic Spatial Features (Hands-On Lab) 9:30 - 12:00	GI Science & Remote Sensing	Seismology Surveying & Geodesy		
12:00 - 13:00	Visit to Exhibition / Networking Tea-Coffee Break							
13:00 - 14:30	Municipalities & Smart Cities	Geospatial for Oil & Gas & Transportation Mgmt.		Oracle Workshop Basic Spatial Features (Hands-On Lab) 13:00 - 13:30 Oracle Workshop Advanced Spatial Features (Demo) 13:30 - 14:30	GI- Science & Smartness	City Smartness & Open Data		
14:30 - 16:00	Lunch / Exhibition Visit							
16:00 - 17:30	Valedictory followed by Networking Tea-Coffee and Visit to Exhibition							